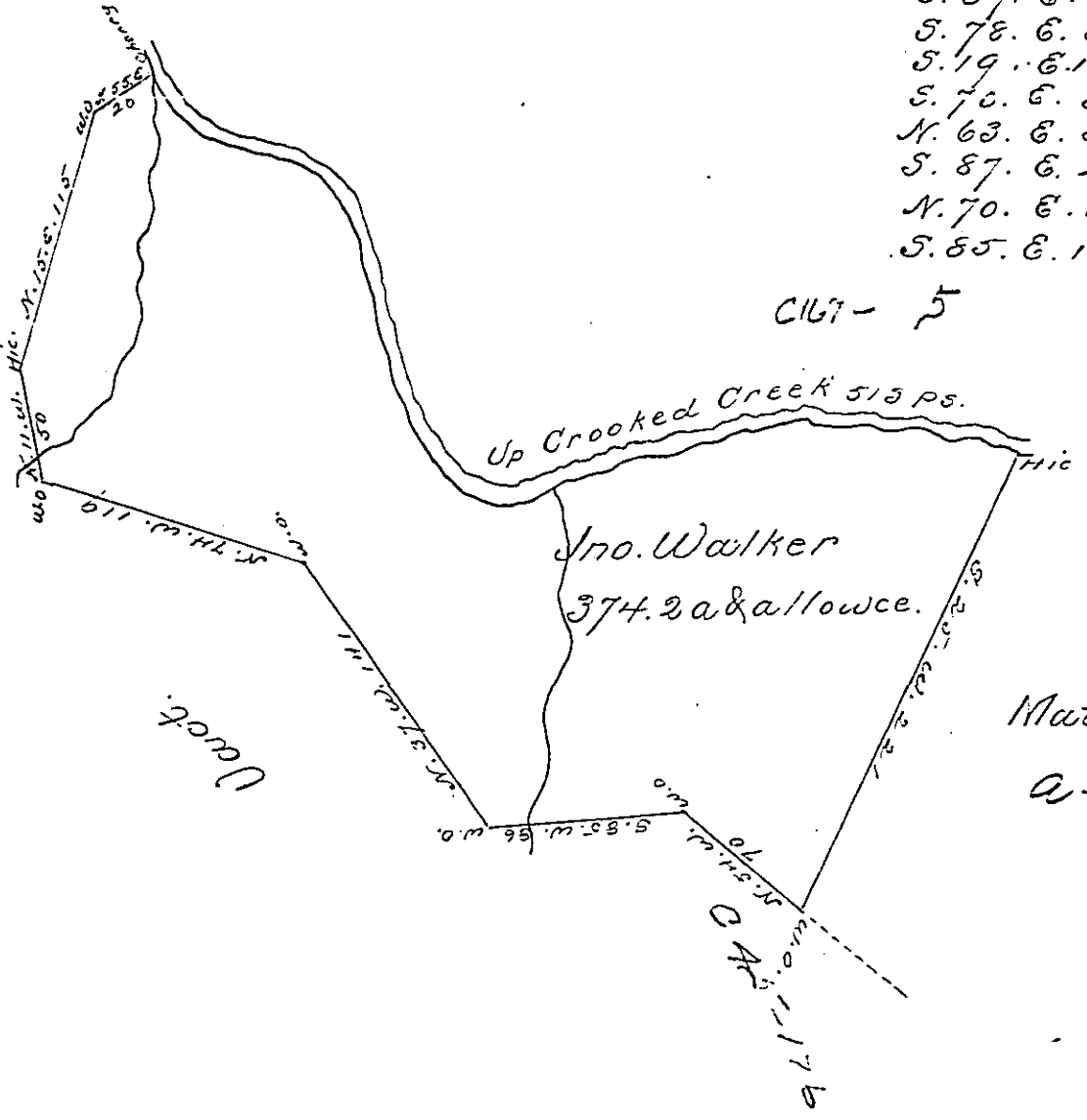


Courses & Distances
on the Creek

- S. 39. E. 38
- S. 78. E. 54
- S. 19. E. 140
- S. 70. E. 38
- N. 63. E. 52
- S. 87. E. 22
- N. 70. E. 54
- S. 85. E. 115

C 772-254

C167-5



Survey'd to John Walker on the 29th Day
 of May 1773. The above described Tract of three hun-
 dred seventy four acres & a quarter of an acre & the
 usual allowance of Six p^{ts}. Situate on Crooked
 Creek in Westmoreland County By order of me.

3d. day of April 1769

No. 2306

p. Joshua Eddis D. S.

To John Lukens Esqr. S. York

IN TESTIMONY that the above is a copy of the original remaining on file in
 the Department of Internal Affairs of Pennsylvania, made
 conformably to an Act of Assembly approved the 16th day of
 February, 1833, I have hereunto set my Hand and caused
 the Seal of said Department to be affixed at Harrisburg,
 this third day of July 1900

James W. Fetter
 Secretary of Internal Affairs.